

SCOTTISHPOWER
RENEWABLES

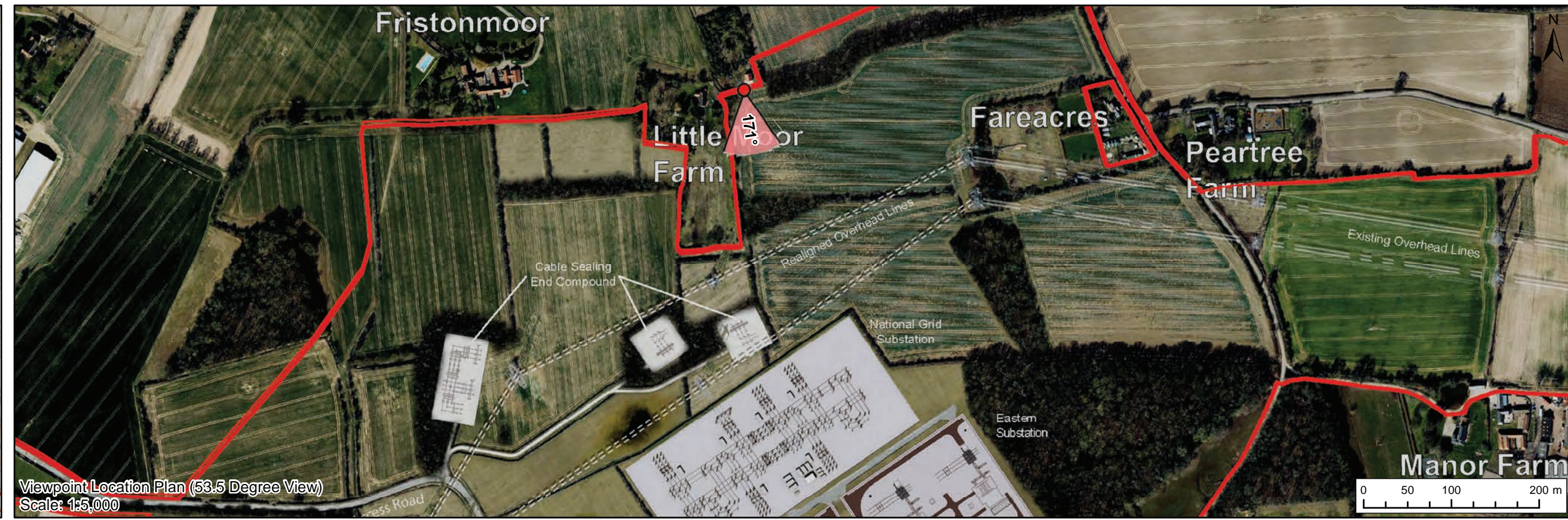
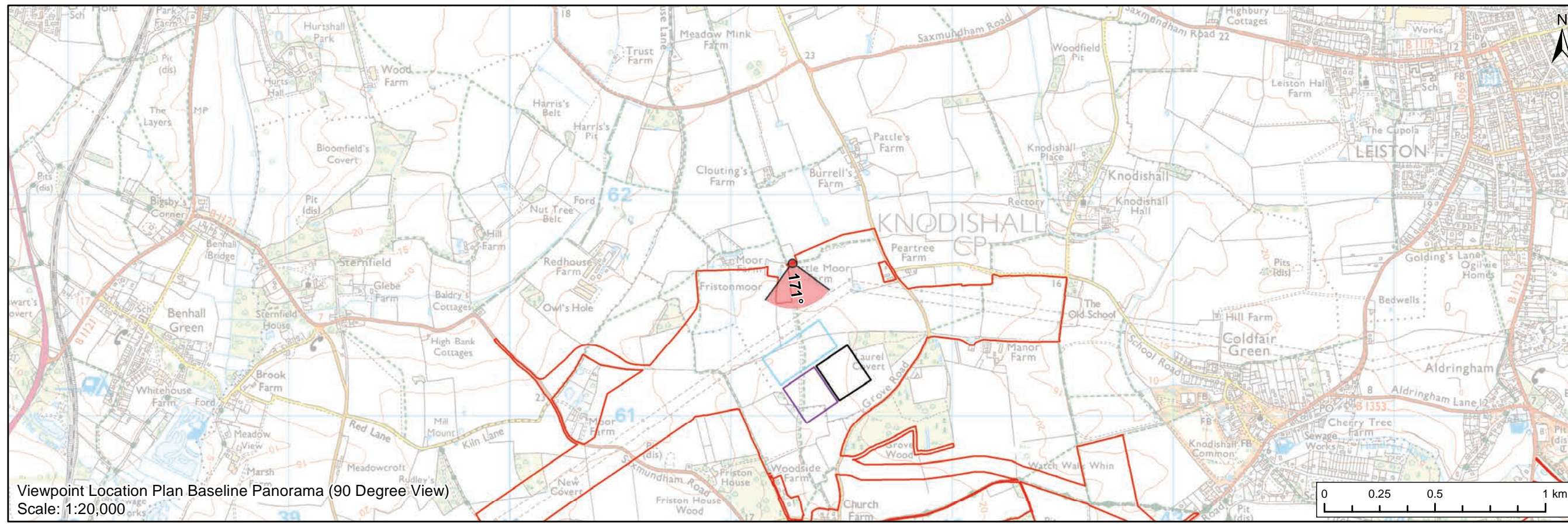
East Anglia ONE North and East Anglia TWO Offshore Windfarms

Heritage Assessment Addendum Appendix 3 CHVP4 – PRow to east of Little Moor Farm (Appendix 24.7, Figure 9 Update)

Applicants: East Anglia ONE North Limited and East Anglia TWO Limited
Document Reference: ExA.AS-11.D4.V1_003
SPR Reference: EA1N_EA2-DWF-ENV-REP-IBR-001191

Date: 13th January 2021
Revision: Version 1
Author: Royal HaskoningDHV

Applicable to **East Anglia ONE North** and **East Anglia TWO**



Legend

- East Anglia ONE North and East Anglia TWO Onshore Development Area
- Western Substation (190m x 170m)
- Eastern Substation (190m x 170m)
- National Grid Substation

Viewpoint:

- 90 Degree Field of View Viewpoint
- 53.5 Degree Field of View Viewpoint



Prepared:	LA	Scale @ A3	
Checked:	SM		
Approved:	LT		
1	13/01/2021	LA First Issue (OPEN)	
Rev	Date	By	Comment

East Anglia ONE North and East Anglia TWO		(Appendix 24.7, Figure 9-Update)
CHVP4: PROW to east of Little Moor Farm	Rev	1
	Date	13/01/21
	Figure	9a
	Coordinate System:	BNG
	Datum:	OSGB36



Baseline Photograph (53.5 Degree Field of View)

View flat at a comfortable arm's length

OS reference: 641278 E 261690 N	Horizontal field of view: 53.5° (planar projection)	Camera: Canon EOS 5D Mark II
Eye level: 24 m AOD	Principal viewing distance: 812.5 mm	Lens: 50mm (Canon EF 50mm f/1.4)
Direction of view: 171°	Paper size: 841 x 297 mm (half A1)	Camera height: 1.5 m AGL
	Correct printed image size: 820 x 260 mm	Date and time: 28/02/2020, 09:19:28

Contains Ordnance Survey digital data © Crown copyright, All rights reserved 2020 Licence number 0100031673

Figure: 9b
CHVP4: PROW to east of Little Moor Farm



Visual representation of 1st year of operational phase
Photomontage of the proposed western substation and National Grid AIS substation

View flat at a comfortable arm's length

OS reference:	641278 E 261690 N	Horizontal field of view:	53.5° (planar projection)	Camera:	Canon EOS 5D Mark II
Eye level:	24 m AOD	Principal viewing distance:	812.5 mm	Lens:	50mm (Canon EF 50mm f/1.4)
Direction of view:	171°	Paper size:	841 x 297 mm (half A1)	Camera height:	1.5 m AGL
		Correct printed image size:	820 x 260 mm	Date and time:	28/02/2020, 09:19:28

Contains Ordnance Survey digital data © Crown copyright, All rights reserved 2020 Licence number 0100031673

Figure: 9c
CHVP4: PROW to east of Little Moor Farm



Visual representation of 15th year of operational phase
Photomontage of the proposed western substation and National Grid AIS substation

View flat at a comfortable arm's length

OS reference:	641278 E 261690 N	Horizontal field of view:	53.5° (planar projection)	Camera:	Canon EOS 5D Mark II
Eye level:	24 m AOD	Principal viewing distance:	812.5 mm	Lens:	50mm (Canon EF 50mm f/1.4)
Direction of view:	171°	Paper size:	841 x 297 mm (half A1)	Camera height:	1.5 m AGL
		Correct printed image size:	820 x 260 mm	Date and time:	28/02/2020, 09:19:28

Contains Ordnance Survey digital data © Crown copyright, All rights reserved 2020 Licence number 0100031673

Figure: 9d
CHVP4: PROW to east of Little Moor Farm



Visual representation of 1st year of operational phase
 Photomontage of the proposed eastern substation and National Grid AIS substation

View flat at a comfortable arm's length

OS reference:	641278 E 261690 N	Horizontal field of view:	53.5° (planar projection)	Camera:	Canon EOS 5D Mark II
Eye level:	24 m AOD	Principal viewing distance:	812.5 mm	Lens:	50mm (Canon EF 50mm f/1.4)
Direction of view:	171°	Paper size:	841 x 297 mm (half A1)	Camera height:	1.5 m AGL
		Correct printed image size:	820 x 260 mm	Date and time:	28/02/2020, 09:19:28

Contains Ordnance Survey digital data © Crown copyright, All rights reserved 2020 Licence number 0100031673

Figure: 9e
 CHVP4: PROW to east of Little Moor Farm



Visual representation of 15th year of operational phase
Photomontage of the proposed eastern substation and National Grid AIS substation

View flat at a comfortable arm's length

OS reference:	641278 E 261690 N	Horizontal field of view:	53.5° (planar projection)	Camera:	Canon EOS 5D Mark II
Eye level:	24 m AOD	Principal viewing distance:	812.5 mm	Lens:	50mm (Canon EF 50mm f/1.4)
Direction of view:	171°	Paper size:	841 x 297 mm (half A1)	Camera height:	1.5 m AGL
		Correct printed image size:	820 x 260 mm	Date and time:	28/02/2020, 09:19:28

Contains Ordnance Survey digital data © Crown copyright, All rights reserved 2020 Licence number 0100031673

Figure: 9f
CHVP4: PROW to east of Little Moor Farm



Visual representation of 1st year of operational phase
 Photomontage of the proposed western substation, eastern substation and National Grid AIS substation

View flat at a comfortable arm's length

OS reference:	641278 E 261690 N	Horizontal field of view:	53.5° (planar projection)	Camera:	Canon EOS 5D Mark II
Eye level:	24 m AOD	Principal viewing distance:	812.5 mm	Lens:	50mm (Canon EF 50mm f/1.4)
Direction of view:	171°	Paper size:	841 x 297 mm (half A1)	Camera height:	1.5 m AGL
		Correct printed image size:	820 x 260 mm	Date and time:	28/02/2020, 09:19:28

Contains Ordnance Survey digital data © Crown copyright, All rights reserved 2020 Licence number 0100031673

Figure: 9g
 CHVP4: PROW to east of Little Moor Farm



Visual representation of 15th year of operational phase
 Photomontage of the proposed western substation, eastern substation and National Grid AIS substation

View flat at a comfortable arm's length

OS reference:	641278 E 261690 N	Horizontal field of view:	53.5° (planar projection)	Camera:	Canon EOS 5D Mark II
Eye level:	24 m AOD	Principal viewing distance:	812.5 mm	Lens:	50mm (Canon EF 50mm f/1.4)
Direction of view:	171°	Paper size:	841 x 297 mm (half A1)	Camera height:	1.5 m AGL
		Correct printed image size:	820 x 260 mm	Date and time:	28/02/2020, 09:19:28

Contains Ordnance Survey digital data © Crown copyright, All rights reserved 2020 Licence number 0100031673

Figure: 9h
CHVP4: PROW to east of Little Moor Farm